

MONTHLY MEMBERSHIP PROGRESS REPORT

LOCATION KENTUCKY

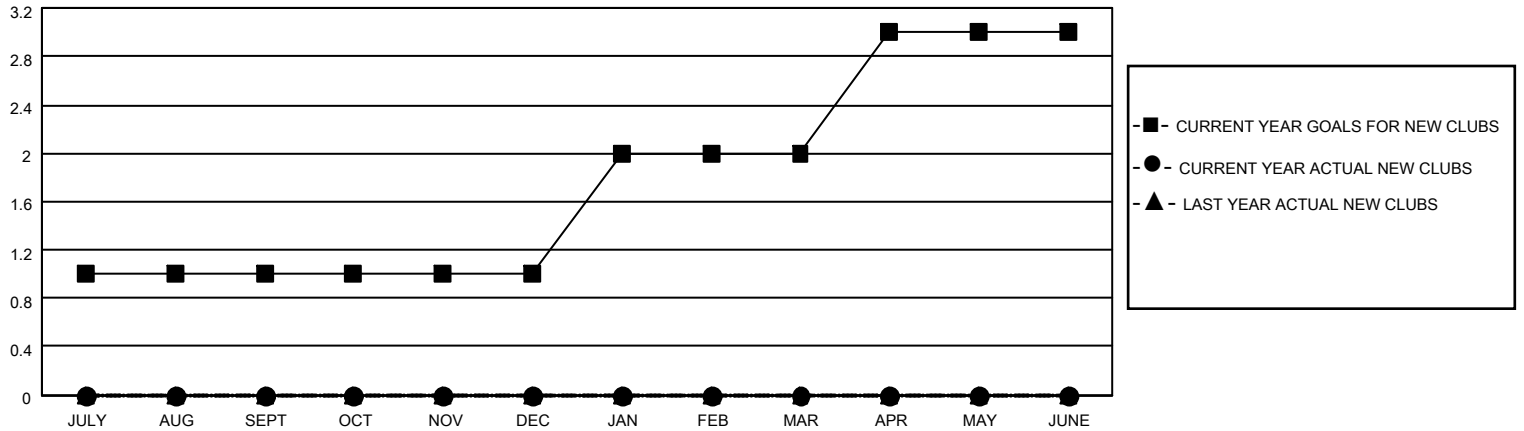
District 43 K

Results as of: 12/31/2020

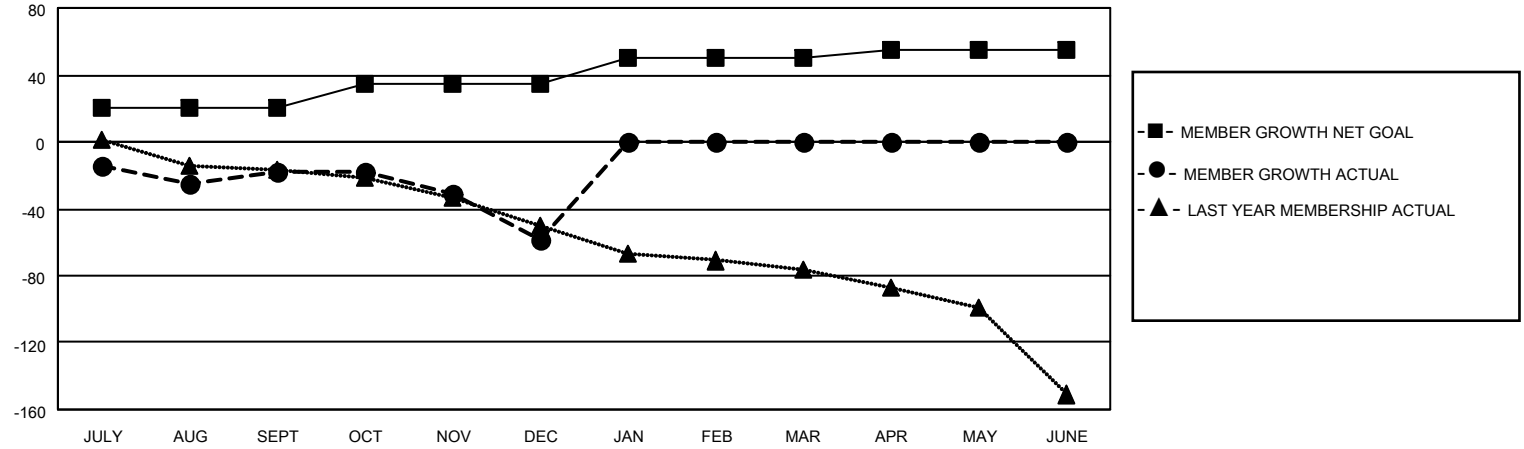
Clubs			
RESULTS FOR 2020-2021			
QUARTER	NEW CLUB GOAL	NEW CLUBS	DROPPED CLUBS
JULY/AUG/SEPT	1	0	0
OCT/NOV/DEC	0	0	0
JAN/FEB/MAR	1	0	0
APR/MAY/JUNE	1	0	0

Members			
RESULTS FOR 2020-2021			
QUARTER	MEMBER GROWTH NET GOAL	MEMBER GROWTH ACTUAL	DROPPED MEMBERS ACTUAL (including transfers)
JULY/AUG/SEPT	20	20	34
OCT/NOV/DEC	15	31	69
JAN/FEB/MAR	15	0	0
APR/MAY/JUNE	5	0	0

GOALS AND ACTUAL NEW CLUBS CUMULATIVE



GOALS AND ACTUAL MEMBERS CUMULATIVE



DROPPED CLUBS: 0	22 CLUBS OF 70 ADDED 1 OR MORE NEW MEMBERS	<p style="text-align: center;"><u>GENDER DISTRIBUTION</u></p> <p>MALE 1,278 (67.19%)</p> <p>FEMALE 624 (32.81%)</p>
<p style="text-align: center;"><u>DROPPED MEMBERS</u></p> <p>DECEASED 16</p> <p>CLUB CANCELLED 0</p> <p>OTHER 87</p> <hr/> <p>TOTAL 103</p>	<p>CLICK HERE FOR CUMULATIVE MEMBERSHIP DATA</p>	<p>TOTAL FAMILY UNIT MEMBERS 379</p> <p>FAMILY MEMBERS PAYING HALF DUES 194</p>